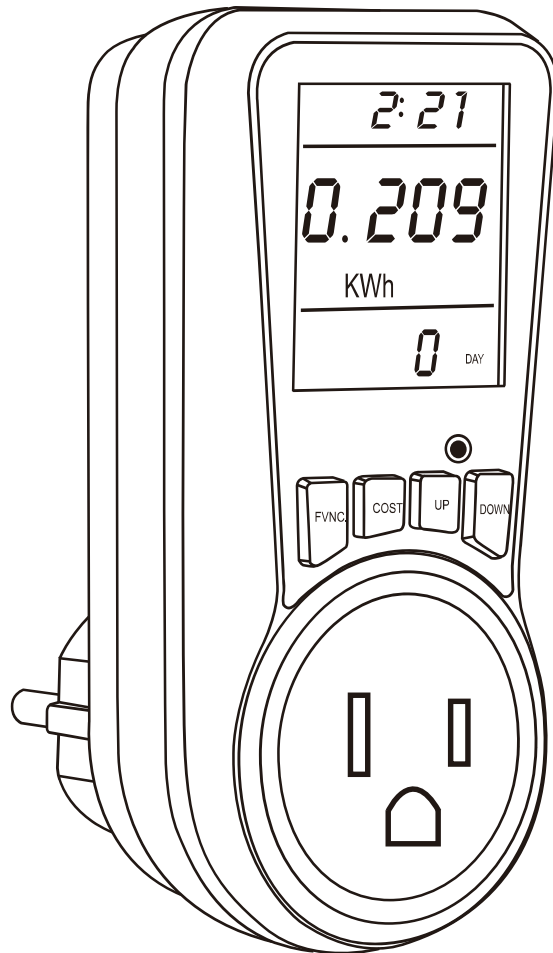


SURAELEC

Energy Watt Meter

SKU:UPWMA01A
[Instruction Manual]



Warning: To reduce the risk of fire, electric shock or personal injury, please strictly follow the instructions.

1. Do not connect any devices which may exceed the maximum ratings of this power meter.
2. Avoid high humidity, high temperature and high magnetic field.
3. Do not insert needles or any other metal objects into mains outlet.
4. Do not touch the device with wet hands.
5. Do not disassemble or repair the product, but only by authorized service personnel.
6. Children are not allowed to use the power meter without supervision.

Operating Instructions

Reset

Before initial use, all setting should be reset. The reset button is between the “up” and “down”.

Use a paper clip or ball point pen to press the button for 3 or more seconds to reset all settings.

Electricity Price Setting

A. Long press the “COST” button for 3 seconds

B. Press the “FUNCTION” button and press the “UP” or “DOWN” to set the price.

Mode Setting

The entire LCD can be displayed for about 1 minute and then it automatically gets into Mode1. To transfer from one mode to another, press the “FUNCTION” button.

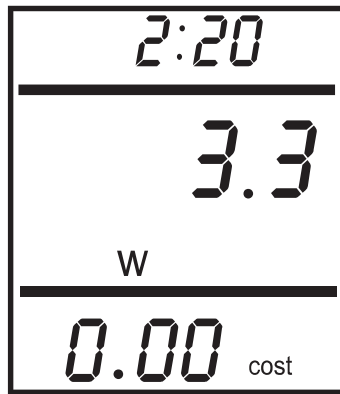
The first line shows the length of time this device is connected to the power source. Within 60 minutes, the first two figures mean minutes and the rest mean seconds. After 60 minutes, it shows 0:00 again and the first two figures mean hour, and the rest mean minutes. After 24 hours, it will re-calculate.

Mode 1: Time/ Watt/ Cost Display

The second line shows current power which range

The third line shows the current electricity costs which ranges in 0.0-9999\$.

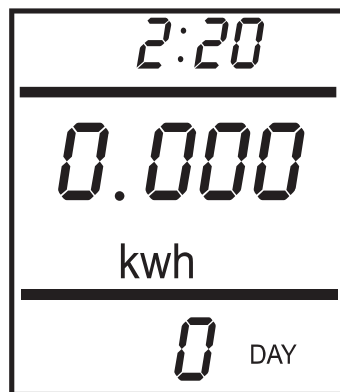
Note: To active the cost function, set the price first.



Mode 2: Time/Cumulative Electrical Quantity Display

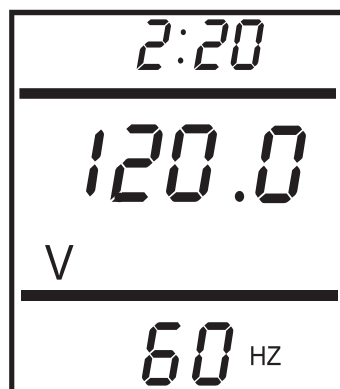
The second line shows the current cumulative power consumption, ranging from 0 to 9999 kWh.

The third line shows the number of days the device is connected to power source, ranging from 0 to 9999 days.



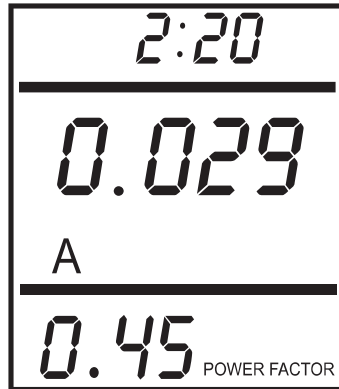
Mode 3: Time/ Voltage/ Frequency Display

The second line shows load voltage supply which ranges in 0.0V-130V. The Third line shows load frequency(HZ) which ranges in 0.0HZ-60HZ without other figures. The first line shows the length of time this device is connected to the power source. Within 60 minutes, the first two figures mean minutes and the rest mean seconds. After 60 minutes, it shows 0:00 again and the first two figures mean hour, and the rest mean minutes. After 24 hours, it will re-calculate.



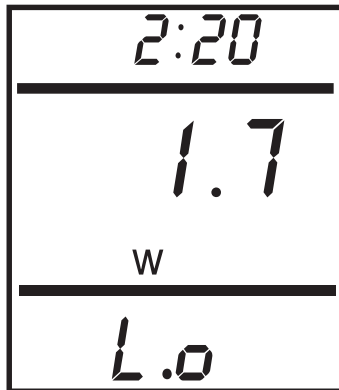
Mode 4: Time/ Current/ Power Factor Display

The second line displays load current which ranges in 0.0A-16A
The Third line displays power factor which ranges in 0.0W-9999W with other figures.

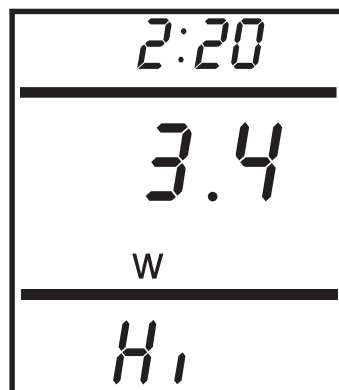


Mode 5: Time/ Minimum Power Display

The second line displays the minimum power which ranges in 0.0W-99
The third line displays character of "Lo" without other figures



Mode 6: Time/ Maximal Power Display



The second line displays the maximal power which ranges in 0.0W-9999W. The third line displays character of “Hi” without other figures

Mode 7: Time/ Price Display



The third line shows the electricity price, ranging from 0 to 99.99 euros / kWh.

Overload Display

When the load is over 3680W, LCD on the second line display the “OVERLOAD” with booming noise to warn the users.

Backlit

When the power meter is connected to AC power source, backlight immediately light, if not press any button, backlight will went off in 15 seconds. When press any of the buttons, backlight start light again.

Note: Backlight only light when it is connected to AC power.

Power Back-up Feature

In the event of a power failure, the power meter will retain its settings for an estimated 3 months assuming the power backup is fully charged.

Specifications

Input Voltage: 120V 60Hz

Operating Current: 15A

Wide Voltage Range: 110-130 Vac

Timing Display: 0 Second-9999days

Wattage Display: 0W- 1950W

Current Display: 0.00A-15.00A

Frequency Display: 60Hz

Price Display Range: 0.00\$/KWH- 99.99\$/KWH

Total KWh and Cost Display: 0.00KWH-9999KWH
0.00\$-9999\$

One Year Limited Warranty

SuraiElec warrants this product to be free from defects in material and workmanship for a period of one year from the date of purchase. Warranty is void if damage is caused by misuse or improper installation.

Email: support@surai-tech.com